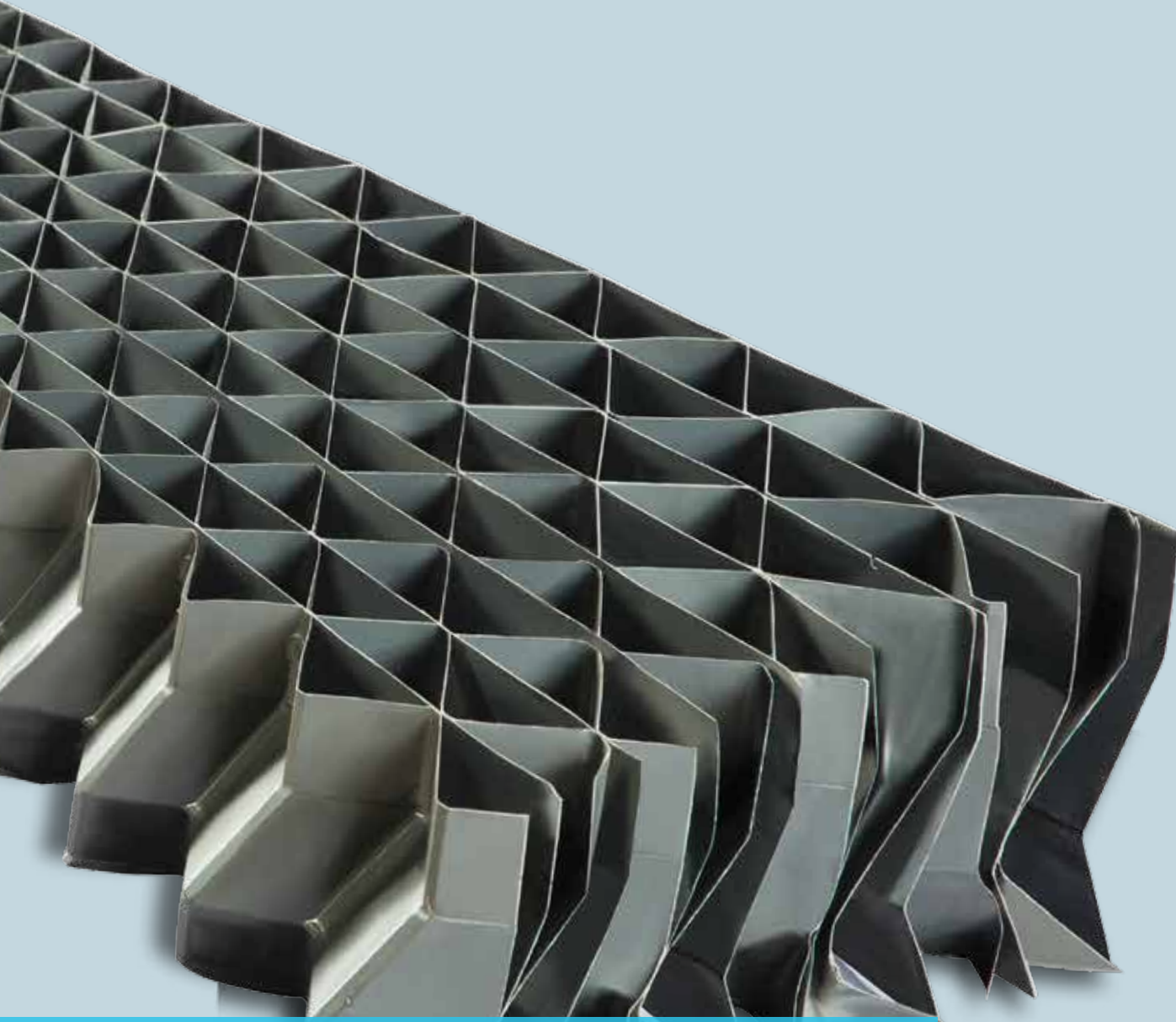


DRIFT ELIMINATOR XCEL TU



Your Full-Service
Cooling Technologies Company
www.paharpur.com



**INDUSTRY-LEADING
DRIFT ELIMINATION**

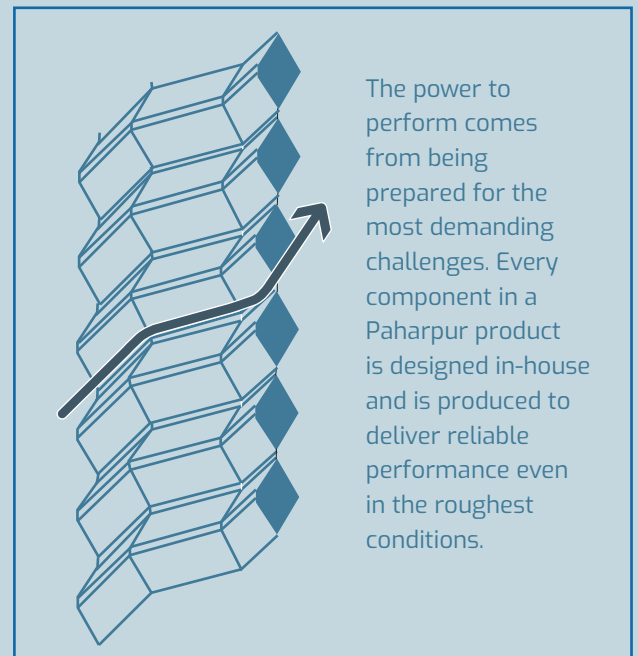
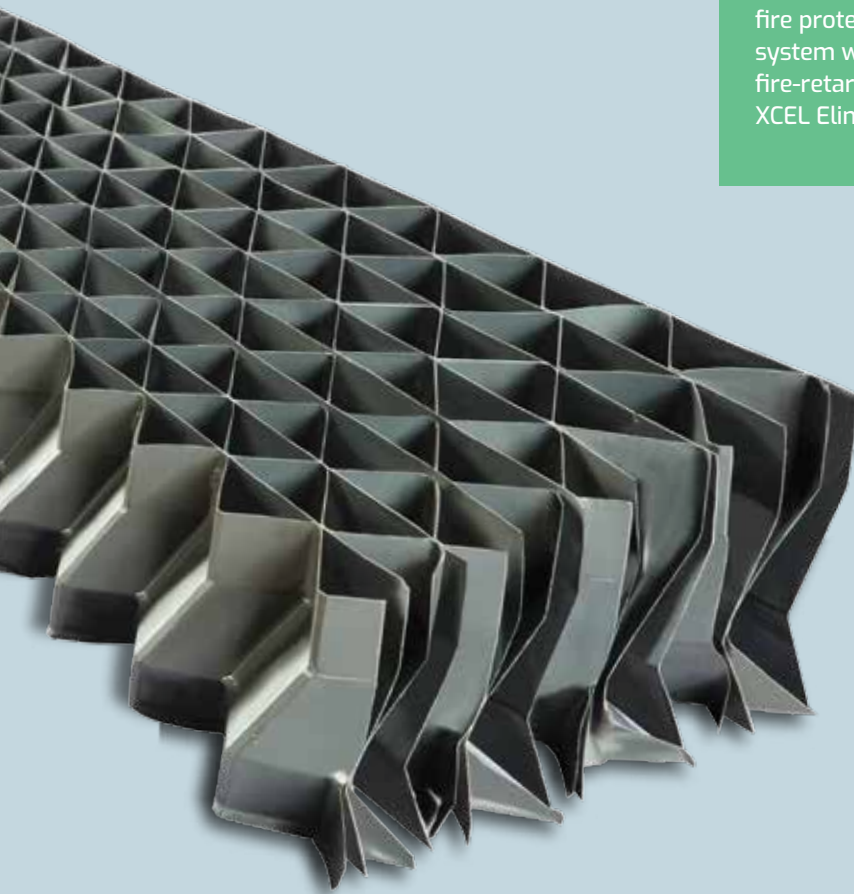
PAHARPUR LEADS

At optimum performance points, the Paharpur XCEL Drift Eliminators outperform competitive designs by nearly 45:1.

Paharpur's **patented** XCEL Drift Eliminators represent a **radical leap forward** in drift eliminator design. These are manufactured in two basic cell sizes and couple **maximum surface area** with drift rate & **pressure drop reductions** that are unapproached by competitive designs.

No need for fire protection system with fire-retardant XCEL Eliminators

- **High degree of structural rigidity:** Installing XCEL is relatively easy since they are shipped to the job site in lightweight, preassembled bundles. These bundles "nest" together in the tower providing an automatic seal against drift by pass. XCEL bundles have a high degree of structural rigidity, which prevents the sagging and displacement between support points that is common on blade type and wave form type eliminators. With XCEL you get the most superior design available in the market – at a competitive price. Given credit for the superior job that it does - and the power savings that it returns – XCEL is the least expensive drift eliminator on the market - by far.



■ **Fire-retardant design:**

XCEL Drift Eliminators are made of fire-retardant, thermo-formed PVC - and have been granted Factory Mutual approval. With XCEL, you need not equip your cooling tower with a fire protection sprinkler system, as may be necessary with other types.

■ **Reduce Drift up to 0.0005% of water flow rate:**

Paharpur provides two kinds of drift eliminator configurations – 3-pass and 6-pass, that reduce drift down to 0.005% and 0.0005% respectively. 6-pass drift eliminators are provided for applications where curbing water loss is of critical importance.

■ **XCEL outperforms competitive designs by 45:1:**

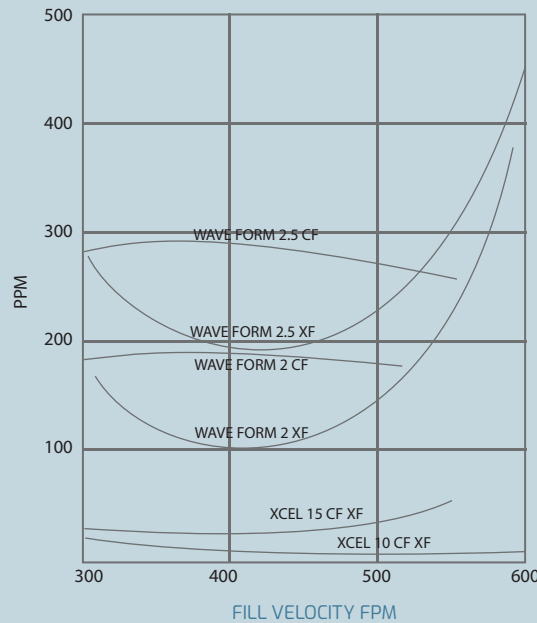
At the wave form eliminator's optimum performance points, curves show that XCEL outperforms it by at least 4:1. At higher air velocities, the XCEL advantage can approach 45:1. Regardless of your design air velocity, XCEL's performance benefits are significant - and you get them at a competitive price.

■ **Avoid spotting, icing, corrosion & biological damage:**

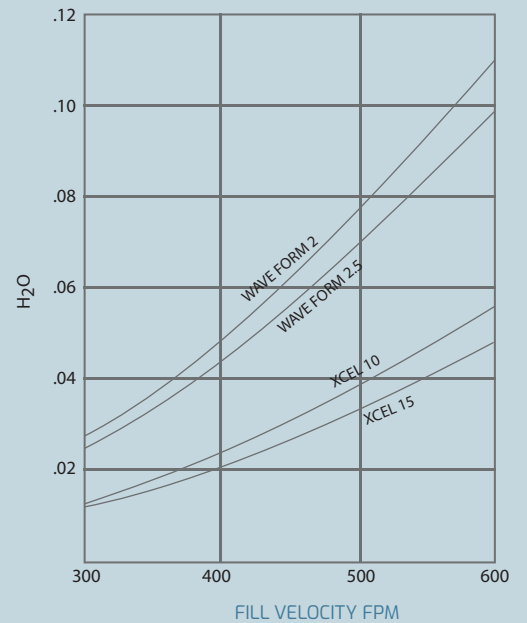
Low drift rate is the primary objective of eliminator design. Drift exceeding 100 pounds of water per million pounds of air flow (100 ppm) become noticeable and cause spotting on nearby cars, buildings and equipment. Of greater concern is the potential icing, corrosion, or biological damage brought about by excessive drift. With Paharpur's XCEL Drift Eliminators, you get significant control over water loss and can expect reliable performance.

The bar graphs provide pressure drop and drift rate comparisons (at 600 fpm air velocity) of XCEL 10 and XCEL 15 vs. wave form type eliminators in the normal 2" and 2½ spacing. As can be seen, the wave form eliminator performs much better in counterflow (CF) than it does in cross flow (XF) towers, but in no case does it begin to approach XCEL's capability in either configuration.

DRIFT RATE



PRESSURE DROP





Your Full-Service
Cooling Technologies Company
www.paharpur.com

■ **Customised designs reduce fan power consumption:**

Low drift rate at the expense of fan power is no bargain at all – the two concerns go hand in hand. XCEL is the only drift eliminator which satisfies both concerns to the optimally by utilizing superior design and precision manufacturing.

Resistance to Airflow:

Paharpur's XCEL Drift Eliminators provide less than half the resistance

to airflow imposed by competitive designs. This means that the use of XCEL, in lieu of a wave form type, would result in from 6% to 10% less required fan horsepower. Compared to other more restrictive types, the horsepower savings are even greater. Conversely, if fan pitch is not changed to reduce the horsepower, the XCEL-equipped cooling tower would produce colder

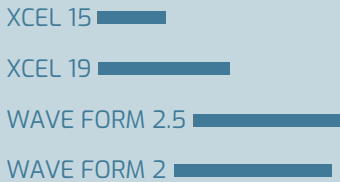
water - by virtue of increased airflow. In many operating cases, the value of colder water may exceed that of reduced horsepower.

Angle Of Discharge:

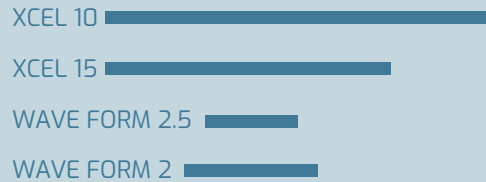
A subtle but significant feature of the XCEL Drift Eliminator is the angle of air discharge, which warrants two separate eliminator designs - one each for crossflow and counterflow cooling towers. Tests reveal that the air direction leaving

the eliminator is crucial and imperfect designs create additional work for the fan. This factors into either increased fan horsepower - or reduced cooling lower performance. By virtue of smarter design, XCEL does not reduce but improve thermal efficiency and overall economy of the cooling operation.

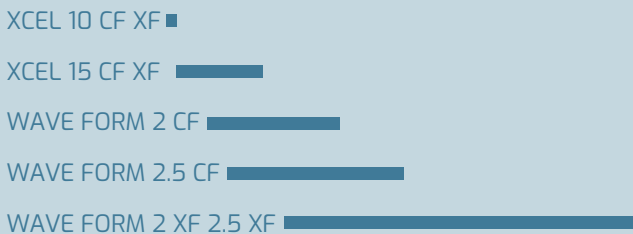
PRESSURE DROP



SURFACE AREA



DRIFT RATE



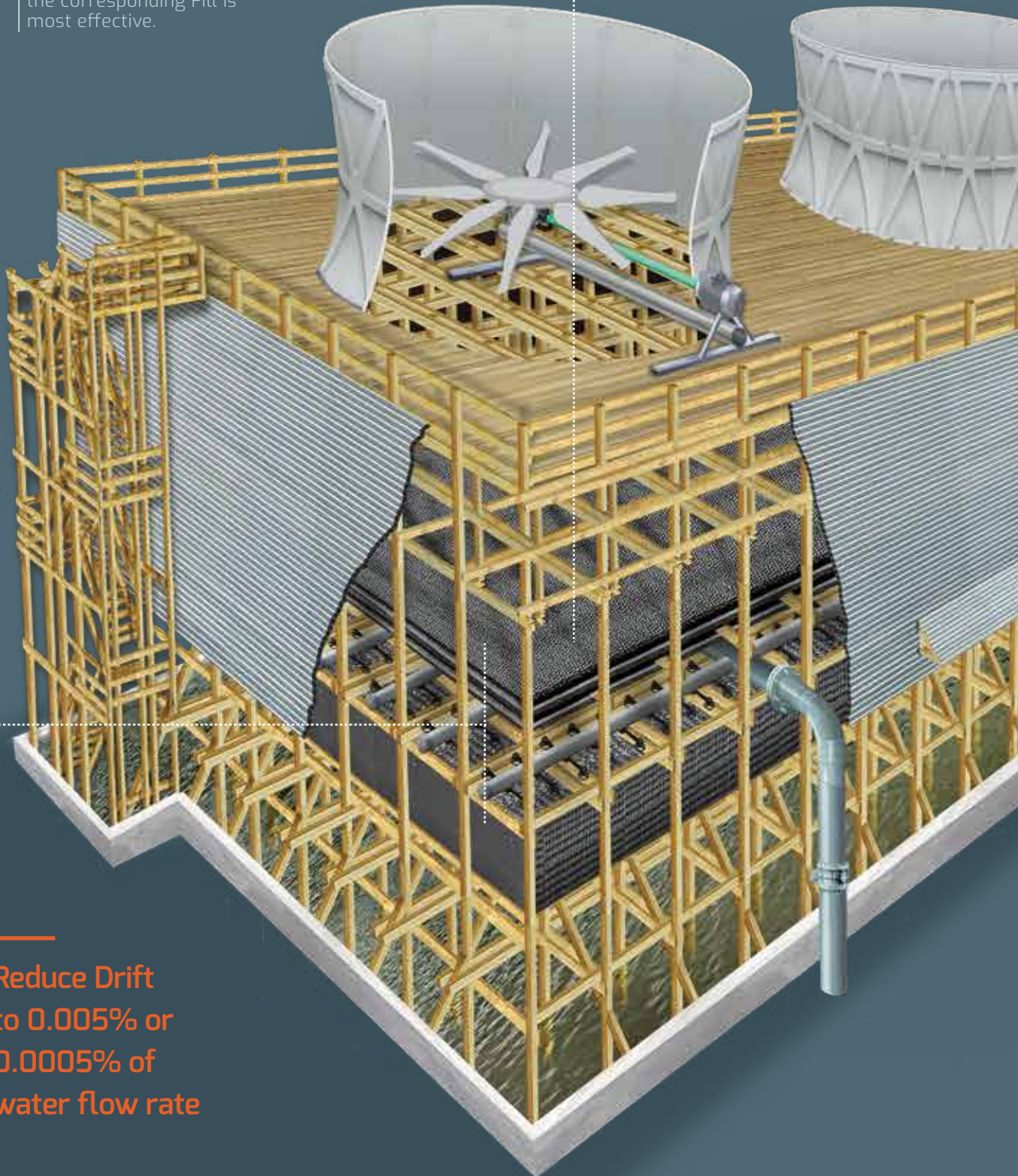
Switch to XCEL from waveform type and reduce 6-10% fan power

**MAXIMISE
OVERALL EFFICIENCY:**

XCEL Drift Eliminators are designed to be most effective at the air velocities at which the corresponding Fill is most effective.

**XCEL DRIFT
ELIMINATORS**

In Paharpur's Class 400 Counterflow Industrial cooling tower.



**Reduce Drift
to 0.005% or
0.0005% of
water flow rate**

PAHARPUR COOLING TOWERS LTD.

Paharpur House
8/1/B Diamond Harbour Road
Kolkata 700027, India
Ph : +91 33 4013 3000
Fax : +91 33 4013 3499
pctccu@paharpur.com



Your Full-Service
Cooling Technologies Company
www.paharpur.com



INDIAN SALES OFFICES

CHENNAI

2G, Vishwapriya Apartment –
3rd floor, Kasthuribhai Nagar,
1st Cross Street, Adyar
Chennai 600020
Ph : +91-44-2490 0275
+91-44-2490 3109
Fax : +91-44-2490 3117
E-Mail : pctmaa@paharpur.com

BENGALURU

Paharpur House
41 Cunningham Road Cross
Bangalore 560052
Ph : +91-80-2226 5566-7
+91-80-2234 1911
Fax : +91-80-2225 3999
E-Mail : pctblr@paharpur.com

HYDERABAD

3rd Floor, "The Grand"
6-3-1090/B/4, Raj Bhavan Road
Somajiguda
Hyderabad 500082
Ph : +91-40-2331 7081-3
Fax : +91-40-2331 7081
E-Mail : pcthyd@paharpur.com

MUMBAI

506 Navkar Chambers, 5th Floor
'B'Wing, Andheri-Kurla Road
Andheri (East)
Mumbai 400059
Phone : +91-22-4043 2432
+91-22-2859 5924-26
Fax : +91-22-2851 4913
E-Mail : pctbom@paharpur.com

NEW DELHI

806 Ashoka Estate
24 Barakhamba Road
New Delhi 110001
Ph : +91-11-2335 7846-50
+91-11-2331 0826
Fax : +91-11-2335 7851
E-Mail : pctdel@paharpur.com

VADODARA

Plot No. 132 KV-I
Manjusar-Savli GIDC
Ta. : Savli, Dist. : Vadodara 391775
Gujarat
Ph : +91-2667- 264331-32
Fax : +91-2667-264333
E-Mail : pctbdq@paharpur.com

INTERNATIONAL SALES OFFICES

Lugano, Switzerland
Izmir, Turkey
Beijing, China
Seoul, South Korea
Denver / Bridgewater/
Overland Park, USA

Brussels, Belgium
Stabio, Switzerland
Varese, Italy
Madrid, Spain
Lagos, Nigeria
Mexico City, Mexico

An ISO 9001:2015,
ISO 14001:2015 &
OSHAS 18001:2007
certified company

www.paharpur.com

PAHARPUR LEADS

Disclaimer:

Paharpur's policy of continued improvement may necessitate data to be changed without notice. For the latest information, please contact Paharpur.